

MOVING YOU FURTHER

340L

SMART



*Photo may include optional equipment

Engine Rated Power
276 HP (206kw) @ 1900rpm

Operating Weight
34200 kg

Bucket Capacity
2.1 m³ GP, 1.62 m³ HD,
1.44 m³ RB SAE Heaped

HYUNDAI
CONSTRUCTION EQUIPMENT
INDIA

Specifications

Engine			
Model		HMC - D6AC-C1	
Type		Water Cooled, 4 cycle diesel, 6 cylinder in line, direct injection turbocharged, charge air cooled and low emission	
Rated flywheel horse power	SAE	J1995 (gross)	276 HP (206 KW) @ 1900 rpm
		J1349 (net)	271 HP (202 KW) @ 1900 rpm
Max. Torque	DIN	6271/1 (gross)	279 PS (206 KW) @ 1900 rpm
		6271/1 (net)	275 PS (202 KW) @ 1900 rpm
Max. Torque		120 kgf.m (868 lbf.ft) @1400 rpm	
Piston displacement		11149 cc	

Hydraulic System	
Main pump	
Type	Two variable displacement piston pumps
Max. flow	2 x 260 lpm
Sub-pump for pilot circuit	Gear pump
Cross-sensing & fuel saving pump system	
Hydraulic motors	
Travel	Two speed axial piston motor with counter balance valve and parking brake
Swing	Axial piston motor with automatic brake
Relief valve settings	
Implement circuits	330 kgf/cm ²
Travel relief setting/Travel working pressure	330/350 kgf/cm ²
Swing circuit relief setting/working pressure	265/280 kgf/cm ²
Power boost (boom, arm, bucket)	360 kgf/cm ²
Pilot circuit	35 kgf/cm ²
Service valve	Installed

Drives & Brakes	
Drive method	Fully hydrostatic type
Drive motor	Axial piston motor in-shoe design
Reduction system	3-STAGE Planetary reduction gear
Max. drawbar pull	28500 kgf (62830 lbf)
Max. travel speed (high/low)	5.4 kmph / 3.2 kmph
Gradeability	35° (70%)
Parking brake	Multi wet disc

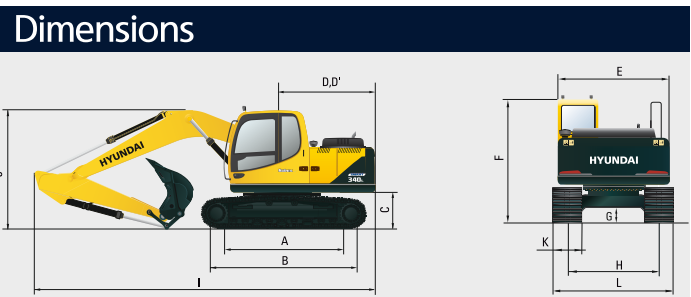
Swing System	
Swing motor	Axial piston motor
Swing reduction	Planetary gear reduction
Swing bearing lubrication	Grease bathed
Swing brake	Multi wet disc
Swing speed	9.5 rpm

Undercarriage	
X-Leg type centre frame is integrally welded with reinforced box section track frames. The undercarriage includes lubricated rollers, idlers, track adjusters, with shock absorbing spring and sprockets, and track chain with double or triple grouser shoes.	
Centre frame	X-leg type
Track frame	Pentagonal box type
No. of shoes on each side	48
No. of carrier rollers, each side	2
No. of track rollers, each side	9
No. of rail guards on each side	3

Robtex
340L **SMART**

Head Office : Plot No. A-2, M.I.D.C Chakan, Phase II, Village: Khalumbre, Taluka: Khed, Dist.: Pune- 410501
Email Id: marketing@hyundaiindia.net
Tel. No.: 02135-301700 Fax. No.: 02135-301712
Toll Free No.: 180030000100

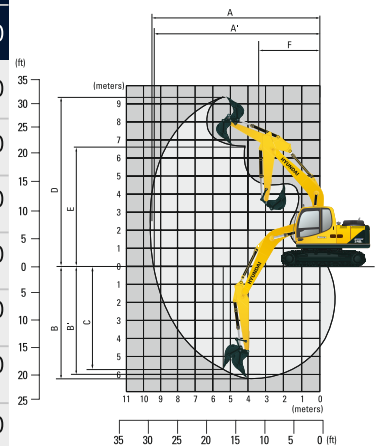
Regional Office North : Delhi Contact No. +91 11 45604521
Regional Office East : Kolkata Contact No. +913330581802
Regional Office South : Bengaluru Contact No. +91 08032521723
Regional Office West : Mumbai Contact No. +91 22 40240320



Dimensions		mm	
A	Tumbler distance	4030	
B	Overall length of crawler	4940	
C	Ground clearance of counterweight	1200	
D	Tail swing radius	3460	
D'	Rear-end length	3400	
E	Overall width of upperstructure	2980	
F	Overall height of cab	3090	
G	Min. ground clearance	500	
H	Track gauge	2680	
I	Overall length	2.2 m ARM	11310
		2.65 m ARM	11200
J	Overall height of boom	3640	
K	Track Shoe Width	600	
L	Overall width	3280	

Working Ranges mm

HD Boom length		6450
HD Arm length		2200 2650
A	Maximum Digging Reach.	10210 10710
A'	Digging Reach on Ground.	10010 10580
B	Max. Digging Depth.	6305 6820
B'	Max. Digging Depth (8' level).	6110 6650
C	Vertical Digging Depth.	5110 6320
D	Maximum Digging Height.	9830 10190
E	Maximum Dumping Height.	6840 7120
F	Minimum Swing Radius.	4840 4620



Operating Weight & Bucket Capacity

Operating weight*	34200kg
Bucket capacity	2.1 m ³ GP, 1.62 m ³ HD, 1.44 m ³ RB SEA Heaped

*HD Equipment

PLEASE CONTACT